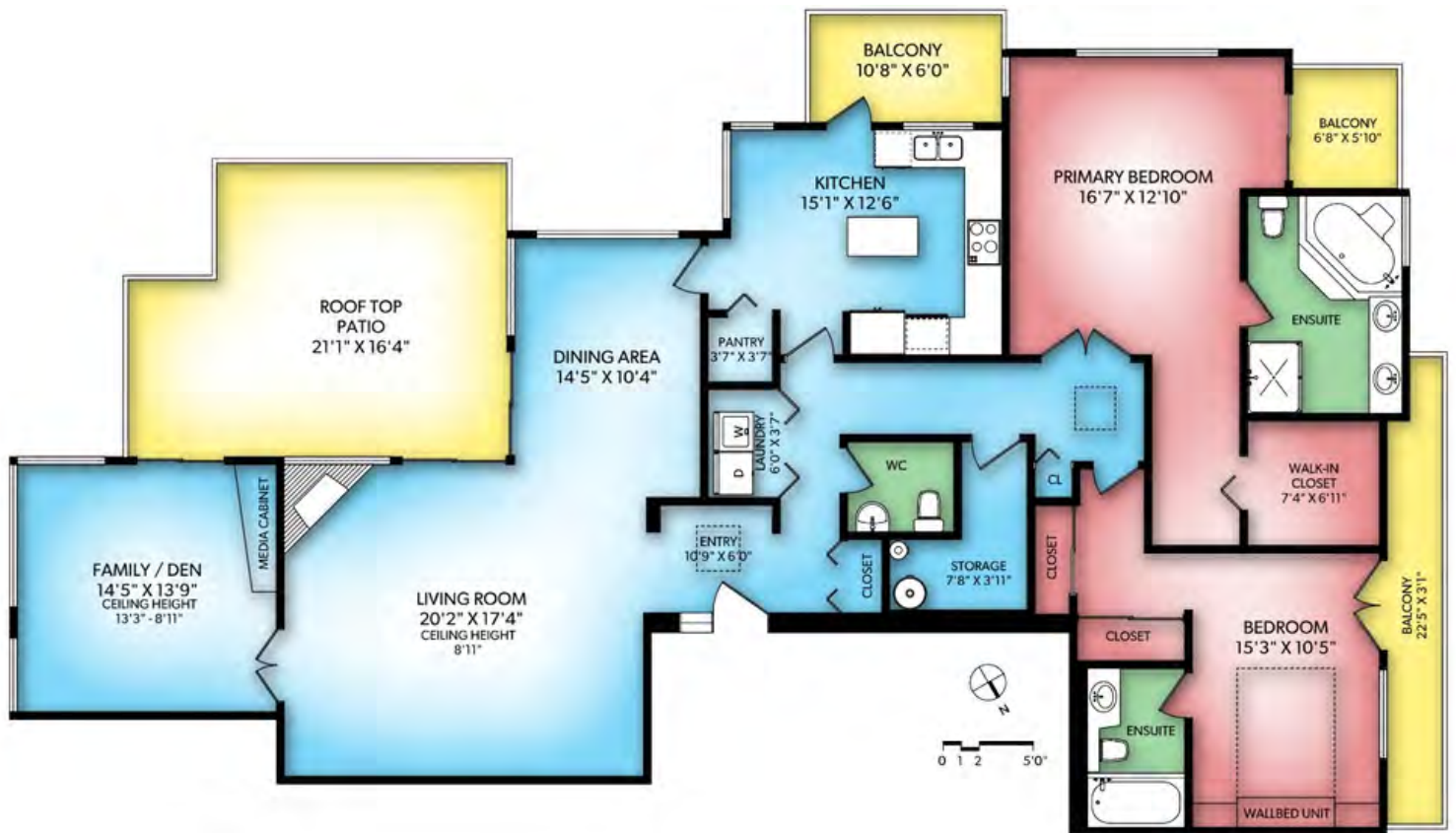




Penthouse with
Ocean & Mountain Views
720-188 Douglas Street
Victoria, BC



CHRISTIE'S
INTERNATIONAL REAL ESTATE



FLOOR	FINISHED	UNFINISHED	TOTAL	OTHER AREAS	
MAIN	2092	0	2092	PATIO	323
TOTAL	2092	0	2092	BALCONY	194





720-188 Douglas Street Victoria, BC

Marvel at the breathtaking Ocean, Mountain, Park and City views from each corner of this penthouse condo. The lovely home offers space and light with over 2000 sq ft of living space, a 320 sq ft deck perfect for entertaining, and 3 other private balconies.

The primary bedroom features a deck with water views and beautiful sunsets plus a walk-in closet and a 5-piece ensuite including a soaker tub. The guest bedroom has a west facing deck and a 4 piece ensuite.

This home features air-conditioning, a gas fireplace and the advantages of a steel and concrete building. The fabulous location is adjacent to Beacon Hill Park, just 200 metres to the Ocean and strolling distance to shops and restaurants in the village of James Bay and Victoria's Inner Harbour.

The Details

Type: Penthouse condo

Year Built: 1991

Views: Ocean, Mountain, Beacon Hill Park & City

Bedrooms: 2 + den

Bathrooms: 3

Finished living area: 2092 square feet

Patio & decks: 517 square feet

Parking: Secured underground with 2 stalls

Heat: Electric & gas

Air Conditioning: Yes





Audra Poole & Hal Decter LLB

Ready to open a new door?

We can help. We have over 20 years of real estate experience in Victoria, combined with a background in design, marketing and law. Learn more at VictoriaRealEstatePros.com

250.385.2033 | Experts@VictoriaRealEstatePros.com