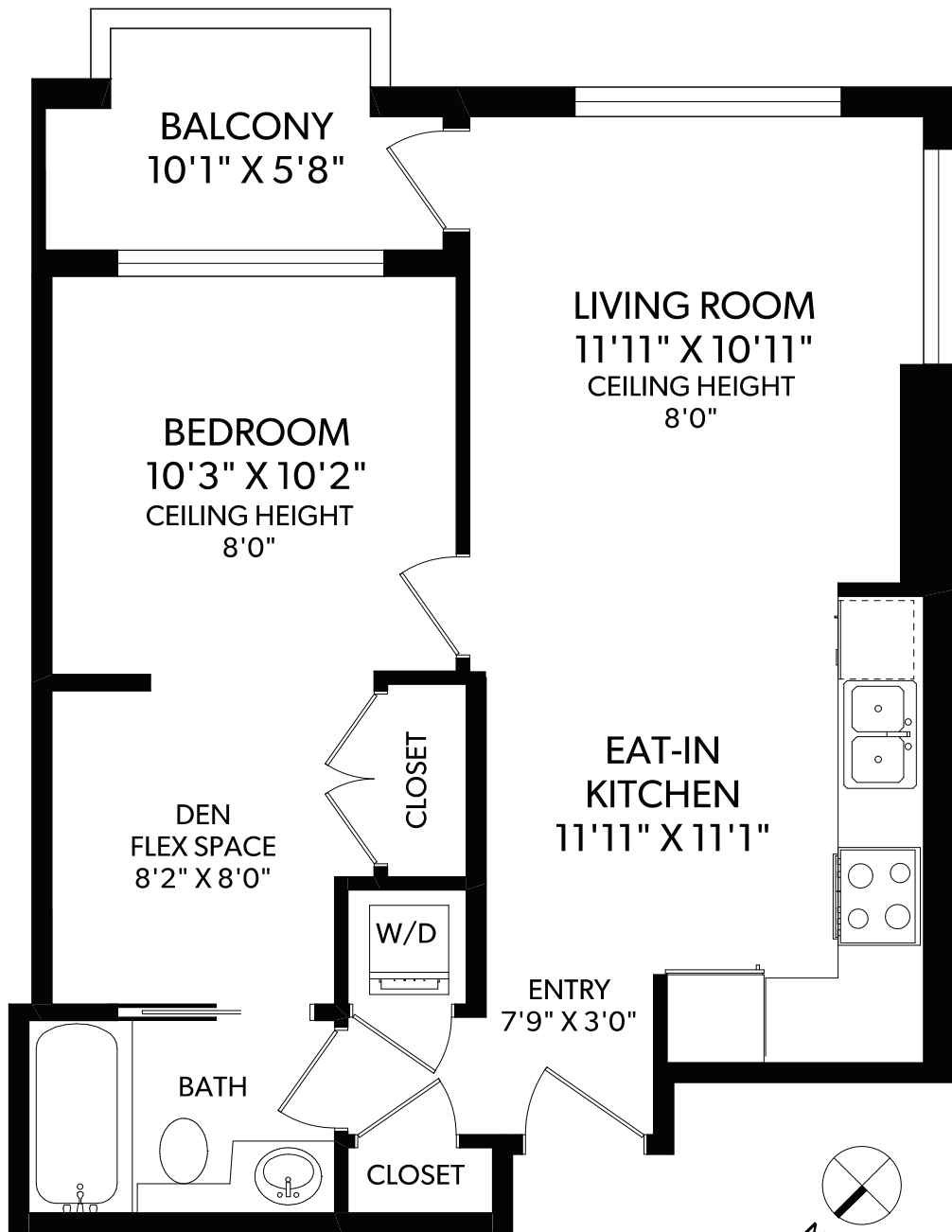




The Astoria
Victoria's Premier Downtown Location
1507 - 751 Fairfield Road
Victoria, BC





FLOOR	FINISHED	UNFINISHED	TOTAL	OTHER AREAS
MAIN	615	0	615	BALCONY 67
TOTAL	615	0	615	





1507 - 751 Fairfield Road Victoria, BC

Spacious 1 bedroom plus den corner suite. Located in The Astoria, a steel and concrete building developed by Concert Properties, one of Victoria's most highly regarded developers.



Boasting a 97 walk score, this property is just one block to the iconic Empress Hotel and easy strolling distance to Beacon Hill Park, numerous shops and restaurants.

This bright south-facing unit has an open floor plan with eat-in kitchen, stainless steel appliances, soaker tub, bamboo floors and expansive windows.

Enjoy a BBQ on your balcony while taking in the treetop views of Beacon Hill Park and the ocean.



Extremely well maintained building with full-time resident manager, fitness centre, meeting room with billiards table, car wash bay, separate storage, secure underground parking and luxurious lobby with fireplace.

A perfect home or investment property!

The Details

Type: Condominium

Configuration: 1 level, corner south-facing unit

Bedrooms: 1 plus den/flex space

Bathrooms: 1

Parking: Covered

Finished area: 615 square feet

Balconies: 1 (10'1" x 5'8")

Building Information: Pet friendly,
no age or rental restrictions





Ready to open a new door?

Hal Decter & Audra Poole

Office: 250.385.2033

VictoriaRealEstatePros.com

experts@victoriarealestatepros.com



CHRISTIE'S
INTERNATIONAL REAL ESTATE